



Specification

◆ E1 Port

Rate: 2.048Mbit/s (N*64k, N=1-31)

Connector: BNC & RJ45

Protocol: G.703; G.704;

Coding: HDB3

Jitter tolerance: G.823

◆ Ethernet Port

Rate: 10/100M

Connector: RJ45

Standard: IEEE 802.3

◆ Operation Environments

Power supply: 220VAC/-48VDC;

Operational temperature:

0°C ~ 50°C

Storage temperature:

-20°C ~ 80°C

Humidity: 95% (no condensation)

Power dissipation : 3W

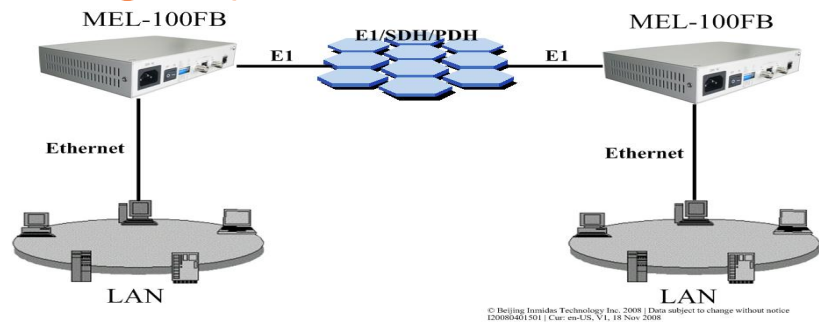
Size: 190×154×37(mm)

> MEL-100FB, FE1 to Ethernet Protocol Converter, which accomplishes the converting between the 10/100M Ethernet port and the E1 port. As an extended device of the Ethernet, it realizes interconnection of two Ethernet by using the E1 channel with low cost .

Feature

- In accordance with G.703, G.704, G.736, G.823, IEEE802.3u standard.
- E1 interface framing or un-framing optional;
- Ethernet interface 10/100M、full/half duplex modes auto-negotiation
- MAC addresses self-learning and addresses filtering automatically
- 64Mbits SDRAM Ethernet data buffer memory, assuring high throughput of data transmission.
- E1 interface main/ slave clock optional in the framing mode
- Support local loop and remote loop
- Support pseudo-random code test function
- Two architectures: stand alone and 19in rack mount architecture (16 interface converter modules can be inserted in the rack mount architecture) ;
- Optional AC 220V or DC -48V input for bridge of both architectures
- Hot rear up of double power supplies is provided for the Bridge of rack mount architecture, assuring high reliability

Topography



© Beijing Inmidas Technology, Inc. 2009 | Data subject to change without notice
120080401501 | Cur: en-US, V1, 18 Nov 2008

Indicator light

POWER: Power. Always lights after starting up.

LINK: Link. Always lights green if the data link is complete.

RX: Data reception. Flickers when data receives .

TX:Data transmission.

LOF: Alarm indicator lamp for input signal out-of-frame in E1 line. Constantly lightening indicates the local; flash with opposite device.

LOS: E1 link interruption alarm.

AIS: Always lights after receiving an alarm indication signal.

CRC: Always lights after finding CRC check error.

TEST: Test. Always lights in testing .

PTOK: Circuit pseudo-random sequence test success.

Order information

The model of Protocol Converter:

MEL-100FB FE1-10/100 BASE-TX bridge, N*64K, 75ohm & 120ohm, AC or DC

MEL-200F/400F FE1-2/4*10/100 BASE-TX bridge, N*64K, 75ohm & 120ohm, AC or DC

MVL-100 V.35-10/100 BASE-TX bridge, N*64K, AC or DC

MEV-LR FE1-V.35&Eth&RS232 bridge, N*64K, 75ohm & 120ohm, AC or DC

MEV-4LR FE1-V.35&4Eth&RS232 bridge, N*64K, 75ohm & 120ohm, AC or DC

MER-132 E1-RS232 bridge, 2.048M,75ohm&120ohm, AC or DC

MER-132F FE1-RS232 bridge, N*64K,75ohm&120ohm, AC or DC

MEV-135F FE1-V.35 bridge, N*64K, 75ohm & 120ohm, AC or DC

MEL-40/80/160 4/8/16E1 to 10/100-BASE-TX bridge, 75ohm or 120ohm, AC or DC

MEL-40B/80B 4/8E1 to 4*10/100-BASE-TX bridge, 75ohm or 120ohm, AC or DC

MEO-100 10/100M Enternet-E1 fiber interface,SC,20km,ACor DC

MEO-101 FE1-Optic 100 Base-FX Bridge, N*64K, 75ohm & 120ohm, 20km, AC or DC

MEO-401 4E1-Optic 100 Base-FX Bridge, 75ohm & 120ohm, 20km, AC or DC

MEO-801 8E1-Optic 100 Base-FX Bridge, 75ohm or 120ohm, 20km, AC or DC

ME-16 16 slots modular chassis (one NMS modular optional), all kinks of modular between E1/V35/Eth/Fiber is optional,4.5U, 19 inch, 1+1 power backup, AC or DC

If you have other requirements of connect or longer distance, please get in touch with us